

First Steps to support miniatures



Congrats on the purchase of your new 3D model! Now it's time to make it come to life by printing it. And, of course, we're here to help you every step of the way!

Follow our guide to print easily with Lychee Slicer and get the best result!

If your 3D model already have supports, you don't need this. You can just print it directly!

1

IMPORT

Import your 3D model in Lychee Slicer (you can **drag and drop** your model).

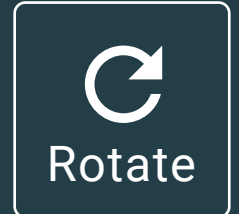
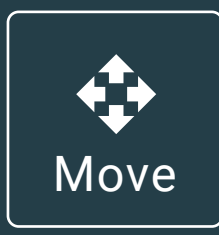
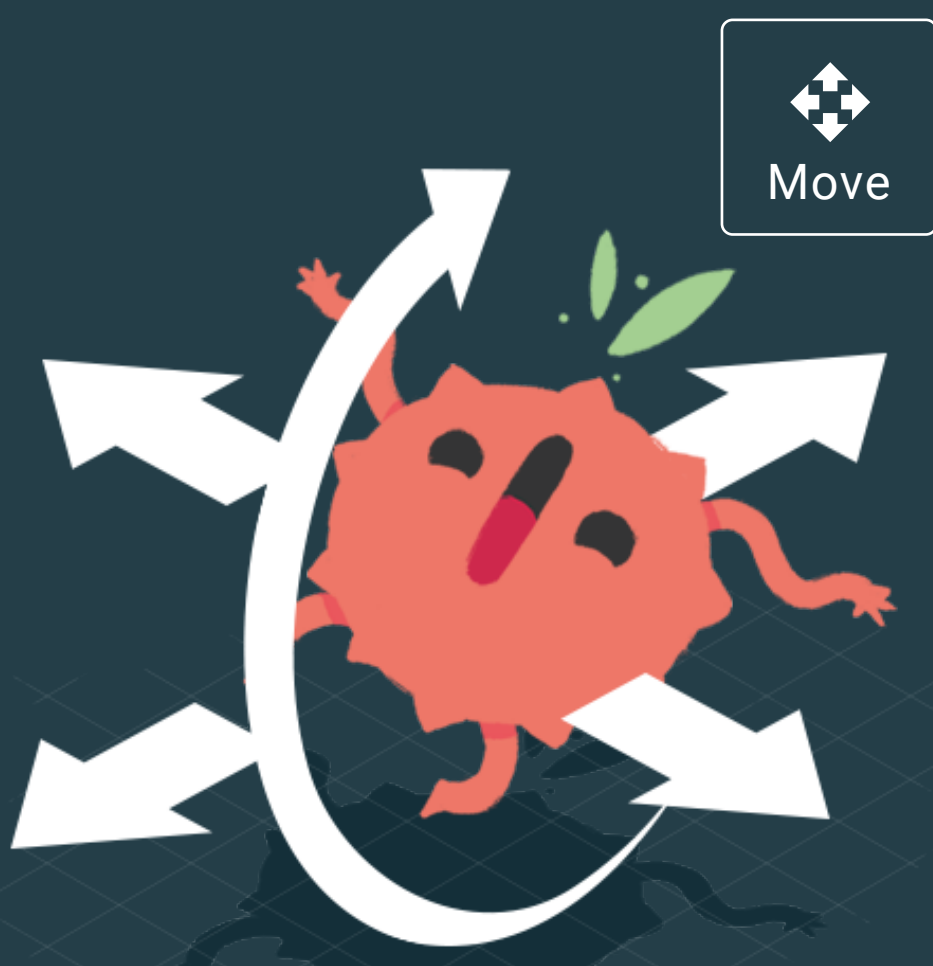


MOVE + ROTATE

2

Click on **"Move"** to adapt the position of your 3D model. Place the 3D model in the middle of your printer plate and move it vertically to lift it from the plate. Lift it enough so it doesn't touch the plate and leave room for the supports underneath.

Click on **"Rotate"** to incline your 3D model at a **45° angle**, with its **back facing the plate**. This way, the supports won't be on the face side of the 3D model. It will be easier to clean without leaving any support marks on the tiny details of your 3D model.



3

MAGIC

Click on the **"Magic" Button**, and turn off the Auto-orientation. Then, choose **the size** of your supports between light, medium and heavy. For miniature models, we recommend you to choose between light and medium supports. Finally, click on **"I'm feeling lucky"**. Your 3D model is now automatically supported, with a raft added on the bottom. It is now ready to be sliced and printed.



RESIN PROFILE

4

Still need to find and add a resin profile? If all these settings scare you and you don't know where to start, we've got you! Find easily the resin profile that suit you the best, thanks to our users all over the world sharing their resin profiles and settings. Check our [YouTube tutorial](#) and follow the steps to go through our [Community Resin Profiles](#) feature.



5

EXPORT

Go to **"Export"**: click on **"Export slices to file"**. Once it's done, your file is ready to go on a USB key and uploaded on your 3D printer.



After these steps, a print could maybe fail for lots of reasons (printer settings and calibration, wrong resin profile, etc).

Don't worry, we got you!

Join our Discord to get more help and to learn more about 3D printing from our passionate community.



Try Lychee Slicer here!

YES, DO IT!

Want some friends?

Join our Discord Community 

FOLLOW US ON SOCIAL MEDIA



Discover more Creations & 3D Models

